



EM4

The World’s First "Thousand-Beam" Long-Range Digital LiDAR

EM4 is the first long-range digital LiDAR on the EM platform, marking the beginning of the "thousand-beam" era in automotive LiDAR technology. Incorporating RoboSense’s new digital architecture, crosstalk elimination, all-condition optical signal processing, and lossless data compression technologies, EM4 delivers groundbreaking performance with up to 1080 beams, a maximum detection range of 600m, and a point rate of 25.92 million points per second.

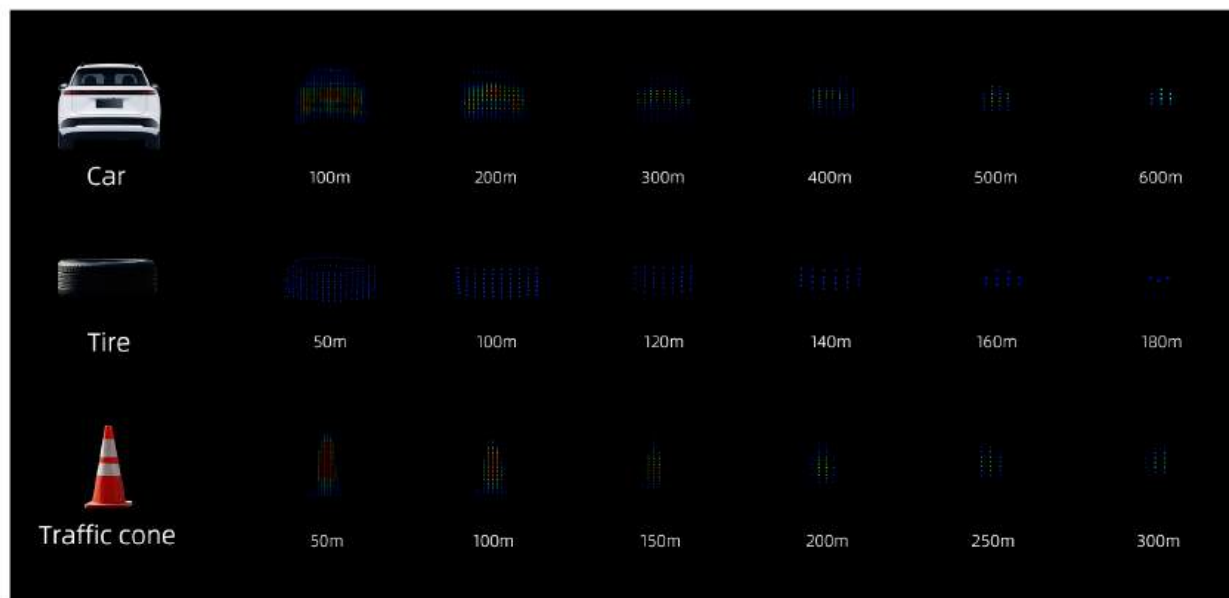
With its ability to provide 1080P high-definition 3D perception, EM4 redefines the standards for intelligent vehicles, leading L3 and above autonomous driving technologies into a new era of development.

Max number of beams	1080-beam	Point per ssecond	25.92 Million pts/s
Longest ranging	600m	FOV	120°×27°
Digital architecture	SPAD-SoC	Data compression ratio	60%

RoboSense / Suteng Innovation Technology Co., Ltd.

RoboSense Global Headquarters – Building 9, Block 2, Zhongguan Honghualing Industry Southern District, 1213 Liuxian Avenue, Taoyuan Street, Nanshan District, Shenzhen, China / 0755-86325830 / service@robosense.cn

The World's First 1080-beam LiDAR, Accurate Detection of Distant Objects

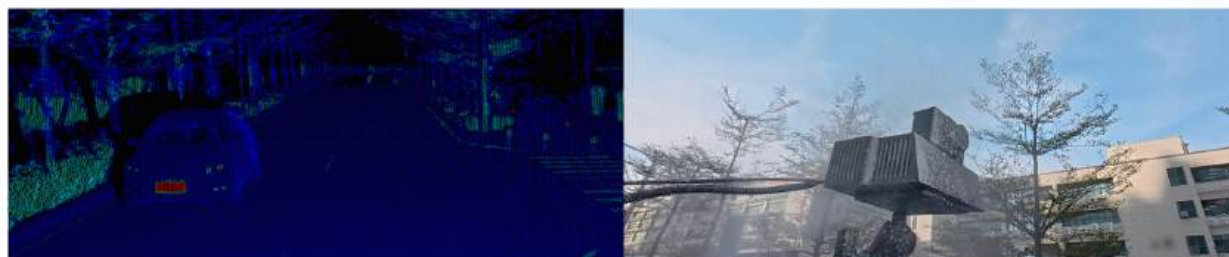


Exclusive Technologies for All-Condition Mastery

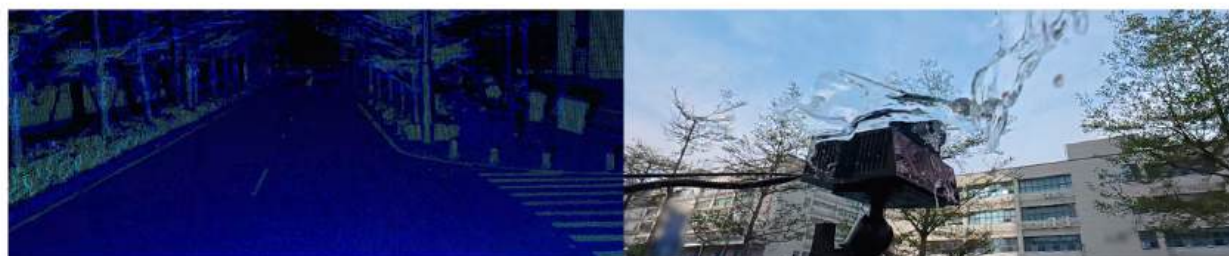
High-Reflection Blooming Suppression



Resilient to Rain, Fog, and Dust



Contamination Resistance



RoboSense / Suteng Innovation Technology Co., Ltd.

RoboSense Global Headquarters – Building 9, Block 2, Zhongguan Honghualing Industry Southern District, 1213 Liuxian Avenue, Taoyuan Street, Nanshan District, Shenzhen, China / 0755-86325830 / service@robosense.cn



www.robosense.ai