

## Features

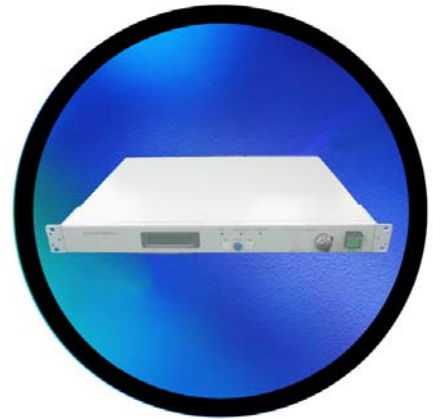
- \* All-fiber technology
- \* Wide wavelength range - 1.06 $\mu$ m, C-band, L-band, C+L-band
- \* High optical output power
- \* Excellently stable and reliable
- \* Customized requirements

## Applications

- \* Optical components testing
- \* Optical fiber characterization
- \* Optical measurement system
- \* Fiber optic sensing

## Description

**GIP Technology** BLS series are the broadband light source. It provides a stable optical output in the wavelength range that covers from 1060nm, C band, L band, to C+L band. Based on proprietary all-fiber technology, they have been designed as a robust, compact, and reliable laser sources with actively air-cooled and maintenance-free operation. This module is useful in applications for DWDM systems, sensor systems, and components characterization.



The low-profile package provides solutions for multiple applications and serving area sizes.

**Specifications**

Optical Information		Unit	Description		
Operating wavelength		nm	1040~1075	1528~1562	1530~1610
Total output power	Min.	dBm	10	15	20
Power density	Min.	dBm/nm	-15	-10	-15
Output power stability*	Max.	dB	± 0.1		
Connector		SC or FC			
Electrical Information					
Operating voltage		Volt	100 ~ 240 Vac		
User Interface Information					
LCD display		Output power, LD current, LD temperature			
LED indicator		OK, LD			
Control key		Left, Enter, Right, ACO			
Laser ON/OFF Switch		Key type			
Current adjust		Knob			
Environmental and Mechanical Information					
Operating temperature		°C	0 ~ 40		
Storage temperature		°C	-20 ~ 80		
Relative humidity (non-condense)		%	5 ~ 85		
Outline Information					
Dimension		mm	19" or 23" or Benchttop		

\*Measured at 25°C , 8 hours after 10 minutes warm up.

