

## 1.5 $\mu$ m Tunable PM Fiber Laser

### Features

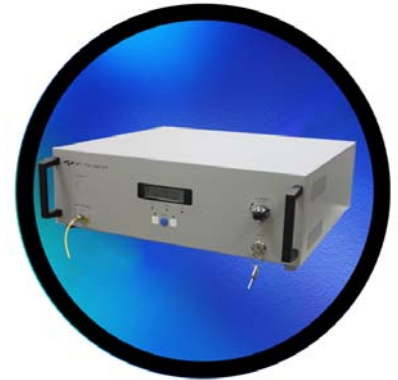
- \* High saturated output power
- \* Wide wavelength tenability
- \* Linear polarization
- \* No water cooling

### Applications

- \* High power seed laser source
- \* Component testing
- \* Sensing
- \* Spectroscopy

### Description

**GIP Technology** newly released tunable PM fiber laser unit (FLU) operating in C-band is a perfect solution in many important fields. Using highly reliable fiber optical components, the fiber laser can deliver a wide range of optical output power in continuous wave. Excellent stability, reliability, and user friendly interface of this model make itself a perfect replacement to the diode pumped solid-state counterpart.



## 1.5 $\mu$ m Tunable PM Fiber Laser CW Mode

### Specifications

Optical Information		Unit	Description
Mode of operation			CW /Timing control
Tuning wavelength range		nm	1530 ~ 1560
Line width	Max.	MHz	10
Nominal output power	Max.	W	1
Output power tunability		%	10 ~ 100
Output power stability* <sup>1</sup>	Max.	dB	±0.3
Beam quality M <sup>2</sup>	Typ.		1.1
Polarization extinction ratio		dB	18
Connector			FC/APC, Collimator or Focuser
Electrical Information			
Cooling method			Air
Power supply			100 ~240 Vac, 50/60Hz
Environmental Information			
Operating temperature		°C	0 ~ 35
Storage temperature		°C	-20 ~ 60
Relative humidity (non-condense)		%	5 ~ 85
Mechanical Information			
Physical dimensions			19" 3-RU

\* RMS, over 1h@25°C



GIP Technology Corporation

6F, No. 112, Shin Min. St., Chung Ho Dist., New Taipei City, Taiwan

Tel: 886-2-82267855

Fax: 886-2-82267955

[www.giptek.com](http://www.giptek.com)

e-mail: sales@giptek.com